

IVC AFV-3542-01

Class I Division 2, Hazardous Area Thermal IP-Camera



- *Cost-effective, certified, outdoor fixed camera*
- *High resolution thermal imager*
- *Detect human activity at over 1,500 feet*
- *White hot/black hot/color modes*

The AFV-3542-01 is a high-resolution, thermal imaging video camera. The camera is housed in a heavy-duty cast aluminum pressurized enclosure suitable for hostile environments. The enclosure is sealed and certified for Class I Division 2, groups A through D. The complete assembly is rated NEMA 6P, IP68.

The camera includes a 30 micron detector that provides high speed, state-of-the-art thermal sensitivity and dynamic range. This high resolution camera is fully compatible with IVC's camera management software. GUI controls are available to select viewing modes, so colorized displays can be optimized to the application.

The AFV-3542-01 is ready for mounting and requires only power and Ethernet connection. All power and signal connections are via a 16-pin circular connector; a mating connector is supplied with the camera. A mount arm and sun shield are also provided. Various mounting options are available.

Visit
www.ivcco.com/demonstrations/index.html
for a live video demonstration

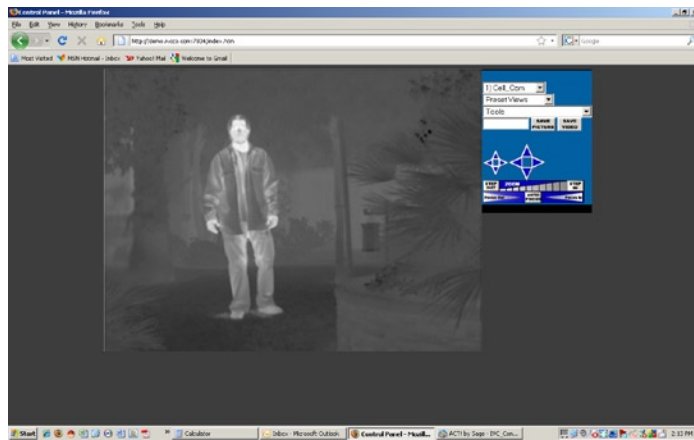
AFV-3542-01 Specifications

Imager	Amorphous Silicon Microbolometer
Spectral Response	7-14µm (filter bandwidth)
Thermal Sensitivity	<50mK
Start-up time	~ 4 seconds
Saturation Temperature	1100°F +/-10% with automatic electronic iris
Range to Detect Human Activity	Up to 2500 ft (765m)
Field of view	12°
Focal length	45mm (other lens options available)
Focus	Manual Athermalized
F-number	1.2
Resolution	352x240, 640x480

Motion Detection	In-video
Ethernet	100Base-TX/10BaseT (RJ-45)
I/O Terminals	2 Input or Output
Compression	M-JPEG, H.264
Frame Rate	30 FPS
Dimensions	6.9"H x 5"W x 18"D
Operating Temp.	-40° to 55° C
Weight	22.5 lbs.
Power Req.	24VDC
Power Cons.	54 W max
Mount	Wall mount standard

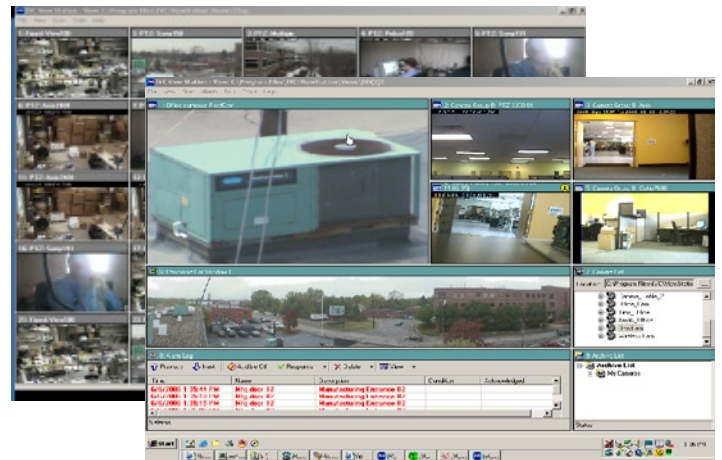
IVC Camera System Software

At the heart of our camera system is our **Relay Server Software**. This scalable, enterprise application provides a full range of camera management and viewing features for up to 24 IP-cameras. Camera video can be accessed over a LAN, WAN, VPN, or the Internet from virtually anywhere, and can be connected by fiber, copper, satellite, or encrypted wireless radio. Live and stored video can be viewed and controlled from anywhere on-site or off-site by authorized users from any networked PC.




Point & click camera access and control

Fully configurable multi-up displays



IVC's **View Station Software** provides comprehensive multi-camera management and viewing. The View Station console is completely configurable. Users can view video from up to 25 cameras on a single or multiple monitors. Tours of selected preset views from any number of cameras can be defined on one or more schedules. The View Station provides sophisticated, yet easy to use alarm management. At the occurrence of a user-defined alarm, any camera control, discreet URL command, or executable program can be invoked.

For more information contact IVC or your local Authorized Reseller



Industrial Video and Control

**330 Nevada Street
Newton, MA 02460
ph: 617-467-3059
fax: 617-687-0751
email: sales@ivcco.com**