

# IVC MZ-3630-NC2

## Outdoor Megapixel Color IP-Camera



- *Cost-effective outdoor fixed camera*
- *5 megapixel resolution*
- *Ideal for applications requiring high detail*
- *Day/night operation*

The MZ-3630-NC2 is a high quality, five megapixel color video camera. It comes with a 10 – 40 mm varifocal lens; other lens options are available. This high-performance MZ camera is ideal for applications that require high resolution images and the ability to digitally zoom in on picture details.

The camera is housed in an outdoor weatherproof enclosure with defogger. It is of die-cast and extruded aluminum construction with secure link-lock access, and cable entry glands and mounting holes on the bottom for easy installation and servicing. The weatherproof enclosure is rated IP66.

The camera is ready for installation and requires only power and a CAT5 Ethernet connection.

Visit  
[www.ivcco.com/demonstrations/index.html](http://www.ivcco.com/demonstrations/index.html)  
for a live video demonstration



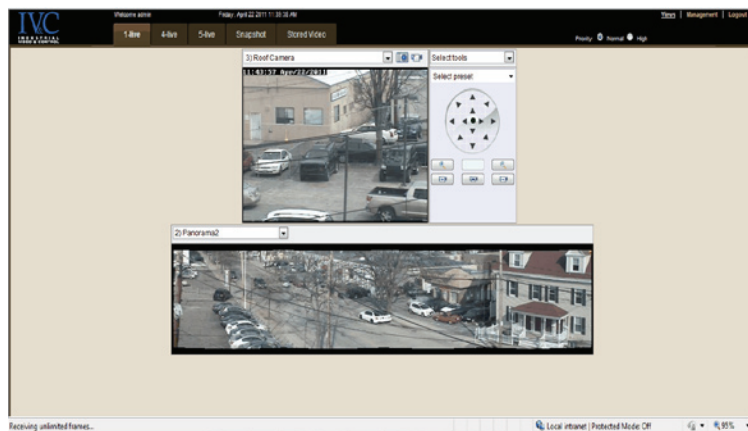
# MZ-3630-NC2 Specifications

<b>Imager</b>	1/2" CMOS
<b>Pixel Array</b>	2596 x 1944
<b>Pixel Pitch</b>	3.2 µm
<b>Min. Illum.</b>	0.2 Lux
<b>White Balance</b>	Auto Multi-Matrix
<b>Iris</b>	Auto
<b>Focus</b>	Manual
<b>View Angle</b>	9° - 35°
<b>Focal Length</b>	10 to 40 mm
<b>F-number</b>	1.4
<b>Ethernet</b>	100BASE-T RJ-45

<b>Compression</b>	M-JPEG
<b>Frame Rate</b>	15 FPS (at 2596x1944)
<b>Protocols</b>	TCP/IP, HTTP, FTP, SMTP
<b>Weight</b>	8.1 lbs.
<b>Power Req.</b>	110 VAC
<b>Power Cons.</b>	26 W
<b>Oper. Temp</b>	-29° to 50° C
<b>Dimensions</b>	4" H x 5.75" W x 18" L
<b>Mount</b>	Wall or Pendant (other mounting options available)

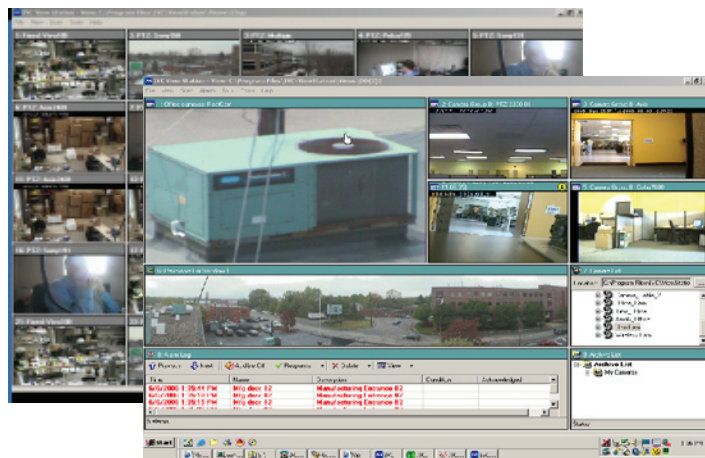
## IVC Camera System Software

At the heart of our camera system is our **Relay Server Software**. This scalable, enterprise application provides a full range of camera management and viewing features for up to 24 IP-cameras. Camera video can be accessed over a LAN, WAN, VPN, or the Internet from virtually anywhere, and can be connected by fiber, copper, satellite, or encrypted wireless radio. Live and stored video can be viewed and controlled from anywhere on-site or off-site by authorized users from any networked PC.



*Point & click camera access and control*

### Fully configurable multi-up displays



IVC's **View Station Software** provides comprehensive multi-camera management and viewing. The View Station console is completely configurable. Users can view video from up to 25 cameras on a single or multiple monitors. Tours of selected preset views from any number of cameras can be defined on one or more schedules. The View Station provides sophisticated, yet easy to use alarm management. At the occurrence of a user-defined alarm, any camera control, discreet URL command, or executable program can be invoked.



330 Nevada Street  
Newton, MA 02460  
ph: 617-467-3059  
fax: 617-687-0751  
email: sales@ivcco.com