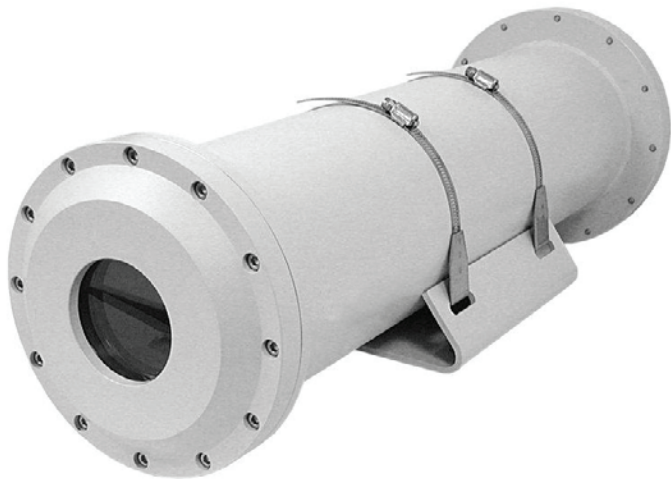


# IVC MZ-3642-NC1

## Class I Zone 1 HD Color IP-Camera



- *2 Megapixel resolution*
- *Day/Night switching for almost any lighting condition*
- *H.264, MPEG4, MJPEG*
- *Multi-zone in-video motion detection*

The MZ-3642-NC1 is a high-quality, high-resolution color video camera with a vari-focal lens and auto-iris. The lens provided is adjustable from 3 to 8 mm, to provide a horizontal field-of-view of over 90 degrees. The MZ-3642-NC1 supports multiple codecs and is able to deliver H.264, MPEG4, and MJPEG video.

The camera can accept one contact closure or TTL input from an auxiliary security or process-monitoring device to initiate automatic views and video recordings of intrusions or process malfunctions.

The camera is housed in a heavy-duty aluminum weatherproof enclosure suitable for hostile environments. The enclosure is certified for Class I Zone 1, AEx, dIIB, EX diBB, Class I, Groups C and D, Class II, Groups E,F, and G. It requires only a power and an Ethernet network connection.

Visit  
[www.ivcco.com/demonstrations/index.html](http://www.ivcco.com/demonstrations/index.html)  
for a live video demonstration

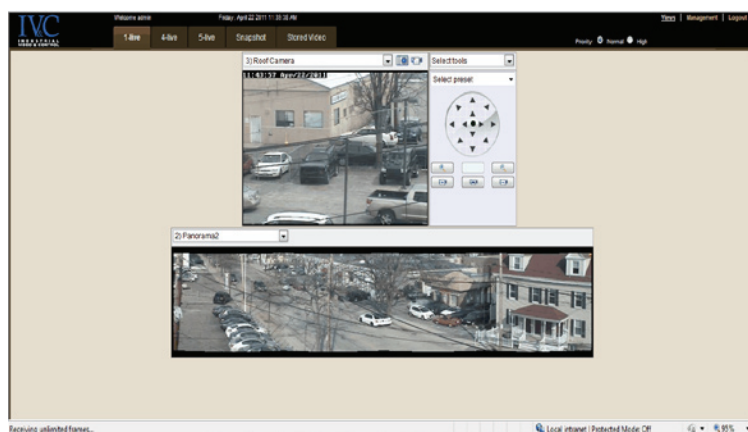


# MZ-3642-NC1 Specifications

<b>Imager</b>	1/3.2" CMOS	<b>Compression</b>	M-JPEG; MPEG4; H.264
<b>AES</b>	1/5 ~ 1/40,000 sec	<b>Ethernet</b>	100Base-TX/10BaseT (RJ-45)
<b>Exposure</b>	Auto	<b>I/O Terminals</b>	1 Input, 1 Output
<b>Min. Illum.</b>	0.1 lux	<b>Alarms</b>	In-video; tamper
<b>White Balance</b>	Auto	<b>Frame Rate</b>	30 FPS (1280x720) 15 FPS (1600x1200)
<b>Iris</b>	Auto	<b>Power Req.</b>	110 VAC
<b>Focus</b>	Manual	<b>Power Cons.</b>	30 W max
<b>View Angle</b>	35.2° - 90.7°	<b>Weight</b>	29 lbs
<b>Focal Length</b>	3 - 8 mm	<b>Dimensions</b>	4.37" W x 3.75"H x 16.0"L
<b>F-number</b>	1.2	<b>Operating Temp.</b>	-29° - 50° C
<b>Resolution</b>	1600x1200	<b>Rating</b>	Class 1 Zone 1, AEx, dIIB, EXdIIB, Class 1 groups C and D, Class II Groups E, F, G NEMA Type 4x; IP66

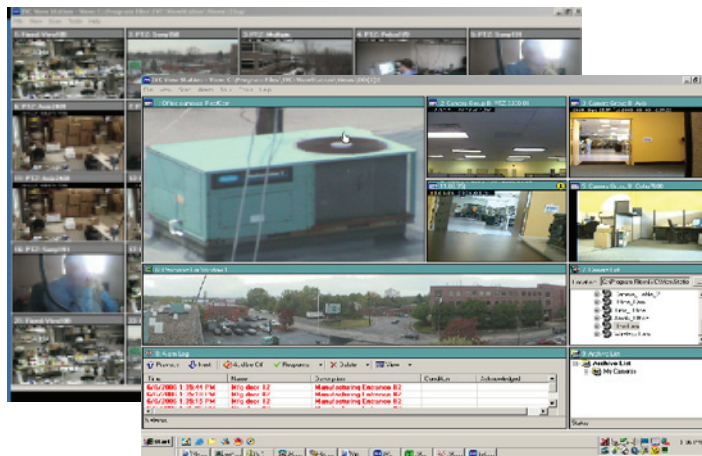
## IVC Camera System Software

At the heart of our camera system is our **Relay Server Software**. This scalable, enterprise application provides a full range of camera management and viewing features for up to 24 IP-cameras. Camera video can be accessed over a LAN, WAN, VPN, or the Internet from virtually anywhere, and can be connected by fiber, copper, satellite, or encrypted wireless radio. Live and stored video can be viewed and controlled from anywhere on-site or off-site by authorized users from any networked PC.



*Point & click camera access and control*

### Fully configurable multi-up displays



IVC's **View Station Software** provides comprehensive multi-camera management and viewing. The View Station console is completely configurable. Users can view video from up to 25 cameras on a single or multiple monitors. Tours of selected preset views from any number of cameras can be defined on one or more schedules. The View Station provides sophisticated, yet easy to use alarm management. At the occurrence of a user-defined alarm, any camera control, discreet URL command, or executable program can be invoked.



330 Nevada Street  
Newton, MA 02460  
ph: 617-467-3059  
fax: 617-687-0751  
email: sales@ivcco.com