

# IVC PTZ-3030-NC17

## Rugged Outdoor Multi-imaging Camera



- *26x zoom day/night switching color camera*
- *Long-range thermal camera (75mm lens)*
- *Vanadium Oxide Thermal Imager for higher thermal coefficient*
- *Assembled on heavy-duty pan-tilt positioner*

The PTZ-3030-NC17 is a full-spectrum camera solution in one integrated package. It includes a thermal imager for extreme low light conditions, or environments clouded by haze, rain, smoke, or fog, and a color day/night switching camera that can be used for precise recognition, identification, or assessment. The thermal imager can detect a man at over 2100 m. The high contrast imager will all the user to readily identify objects in both direct sunlight and absolute darkness.

The day/night camera includes a 26x optical zoom and a 4x digital multiplier providing 104x total zoom.

A separate IP encoder is required for network connection. When connected to an IP network, the pan, tilt, and zoom functions can be controlled automatically and precisely from anywhere using the click-to-point and preset view features of the IVC Relay Server Software.

The cameras are sealed and pressurized to IP-67 and the PT mechanism is sealed to IP-66.

Visit  
[www.ivcco.com/demonstrations/index.html](http://www.ivcco.com/demonstrations/index.html)  
for a live video demonstration

**IVC**  
&  
INDUSTRIAL  
VIDEO & CONTROL

# PTZ-3030-NC17 Specifications

## Optical Camera

|                      |                                 |
|----------------------|---------------------------------|
| <b>Imager</b>        | 1/4 type CCD Super HAD          |
| <b>Exposure</b>      | Auto                            |
| <b>Min. Illum.</b>   | 2.0 lux (Color); 0.05 Lux (B/W) |
| <b>White Balance</b> | Auto                            |
| <b>Iris</b>          | Auto                            |

## Thermal Camera

|                          |                          |
|--------------------------|--------------------------|
| <b>Focal Plane Array</b> | 320 x 240 microbolometer |
| <b>Spectral Range</b>    | 7.5-13 $\mu$ m LWIR      |
| <b>Pitch</b>             | 23.5 $\mu$ m             |
| <b>Focal Length</b>      | 75 mm                    |

## General

|                     |  |
|---------------------|--|
| <b>Voltage Req.</b> | 24 VAC<br>120/230 VAC 50/60Hz optional |
| <b>Oper. Temp</b>   | -32° - 50°C                            |

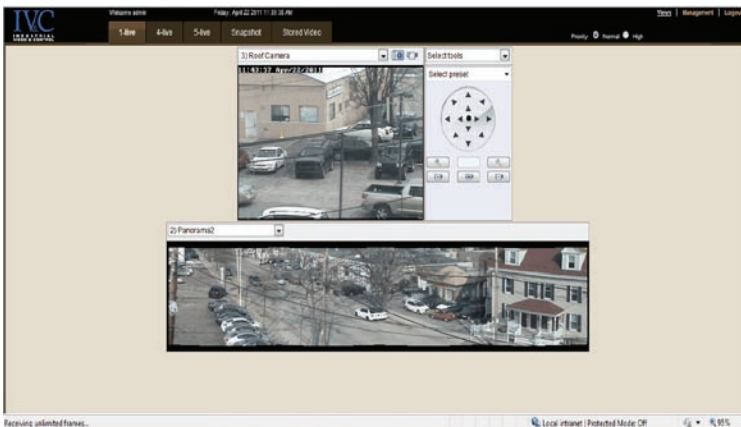
|                   |                                     |
|-------------------|-------------------------------------|
| <b>Focus</b>      | Auto                                |
| <b>Zoom ratio</b> | 26x optical; 4x Digital; 104x Total |
| <b>View Angle</b> | 1.6° - 42°                          |
| <b>Resolution</b> | 680 x 470                           |

|                      |                    |
|----------------------|--------------------|
| <b>Field of View</b> | 9.5°               |
| <b>Resolution</b>    | 320 x 240          |
| <b>Compression</b>   | M-JPEG, H.264      |
| <b>NETD</b>          | <50 mK @ T/1, 60Hz |

|                   |                        |
|-------------------|------------------------|
| <b>Dimensions</b> | 9" W x 18" H x 12.5" L |
| <b>Mount</b>      | Pedestal               |

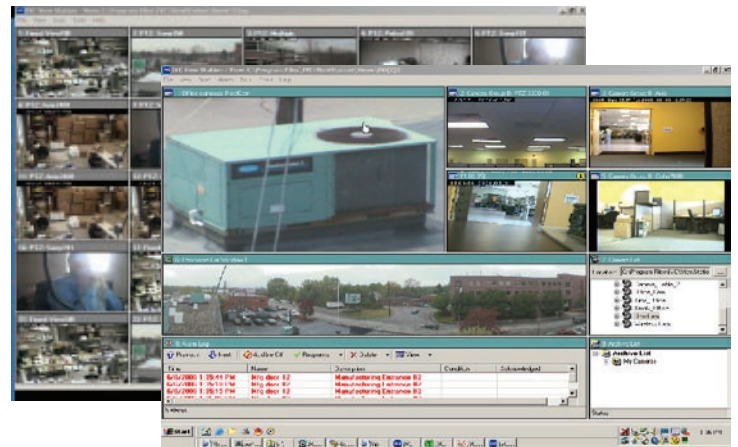
## IVC Camera System Software

At the heart of our camera system is our **Relay Server Software**. This scalable, enterprise application provides a full range of camera management and viewing features for up to 24 IP-cameras. Camera video can be accessed over a LAN, WAN, VPN, or the Internet from virtually anywhere, and can be connected by fiber, copper, satellite, or encrypted wireless radio. Live and stored video can be viewed and controlled from anywhere on-site or off-site by authorized users from any networked PC.



*Point & click camera access and control*

### Fully configurable multi-up displays



IVC's **View Station Software** provides comprehensive multi-camera management and viewing. The View Station console is completely configurable. Users can view video from up to 25 cameras on a single or multiple monitors. Tours of selected preset views from any number of cameras can be defined on one or more schedules. The View Station provides sophisticated, yet easy to use alarm management. At the occurrence of a user-defined alarm, any camera control, discreet URL command, or executable program can be invoked.



330 Nevada Street  
Newton, MA 02460  
ph: 617-467-3059  
fax: 617-687-0751  
email: sales@ivcco.com