

IVC PTZ-3130-LL

Low-light, Outdoor Pan/Tilt/Zoom Color IP-Camera



- *Our most cost-effective outdoor PTZ camera*
- *Day/Night switching for almost any lighting condition*
- *Suitable for harsh weather environments*
- *IP ready*

The PTZ-3130-LL is a high quality, high-resolution color video camera with outstanding low-light performance. It has an 18x motor-driven optical zoom and a 4x digital multiplier providing 72x total zoom. The pan, tilt, and zoom functions can be controlled automatically and precisely from anywhere using the click-to-point and preset view features of the IVC Relay Server Software. This PTZ camera is a high performance low-light camera that automatically switches to black and white and removes an IR cut filter to increase sensitivity in low light conditions.

The camera can accept one contact closure or TTL input from an auxiliary security or process-monitoring device to initiate automatic views and video recordings of intrusions or process malfunctions.

The camera is housed in a weatherproof dome with an automatic heater and blower. The camera is ready for mounting and requires only a power and network connection. It can be factory configured for single or multimode fiber or wireless connection.

Visit
www.ivcco.com/demonstrations/index.html
for a live video demonstration

IVC
Industrial Video and Control

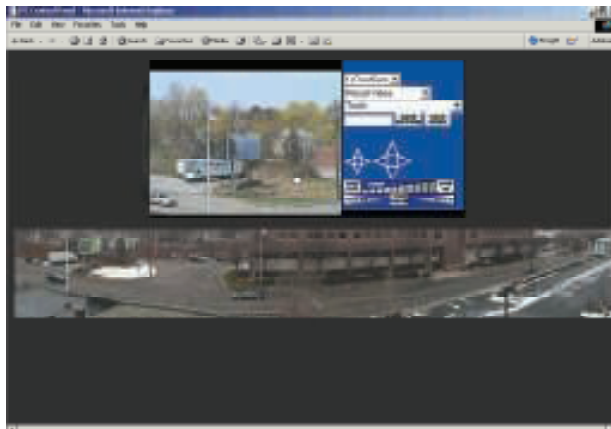
PTZ-3130-LL Specifications

Imager	1/4" Sony ExView CCD
Shutter	1 to 1/10,000 seconds
Exposure	Auto
Min. Illum.	0.7 lux (Color); 0.01 Lux (B/W)
White Balance	Auto
Iris	Auto
Focus	Auto and manual
Zoom ratio	18x optical; 4x Digital; 72x Total
View Angle	2.8° - 48°
Focal Length	4.1 - 73.8 mm
F-number	1.4
Pan Angle	360°
Pan Speed	170° per Second
Tilt Angle	-90° to 0° (113° view range)

Tilt Speed	90° per Second
Ethernet	100Base-TX/10BaseT (RJ-45)
I/O Terminals	1 Input, 1 Output
Resolution	704 x 480 and 352 x 240 pixels
Compression	M-JPEG
Frame Rate	30 FPS (352x240)10 FPS (704x480)
Protocols	TCP/IP, HTTP, FTP, SMTP
Weight	14 lbs.
Voltage Req.	110 VAC
Power Cons.	50 W
Oper. Temp	-29 to 50° C
Dimensions	14" H x 11" D
Mount	Wall Mount Standard (Optional Pole Mount Kit Available)

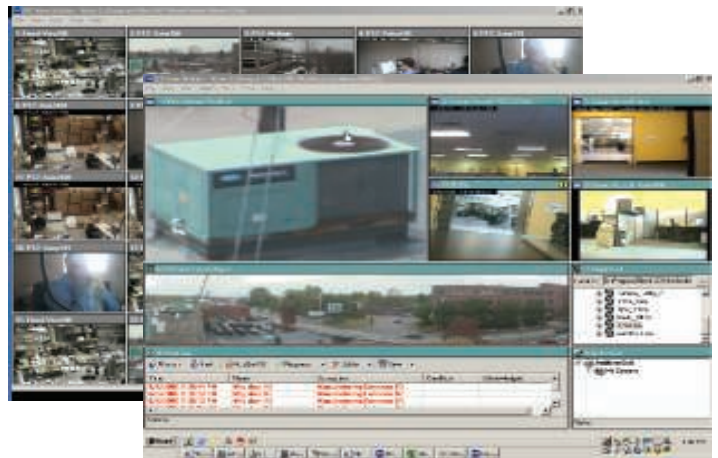
IVC Camera System Software

At the heart of our camera system is our **Relay Server Software**. This scalable, enterprise application provides a full range of camera management and viewing features for up to 24 IP-cameras. Camera video can be accessed over a LAN, WAN, VPN, or the Internet from virtually anywhere, and can be connected by fiber, copper, satellite, or encrypted wireless radio. Live and stored video can be viewed and controlled from anywhere on-site or off-site by authorized users from any networked PC.



Point & click camera access and control

Fully configurable multi-up displays



IVC's **View Station Software** provides comprehensive multi-camera management and viewing. The View Station console is completely configurable. Users can view video from up to 25 cameras on a single or multiple monitors. Tours of selected preset views from any number of cameras can be defined on one or more schedules. The View Station provides sophisticated, yet easy to use alarm management. At the occurrence of a user-defined alarm, any camera control, discreet URL command, or executable program can be invoked.



IVC
&C

Industrial Video and Control

330 Nevada Street
Newton, MA 02460
ph: 617-467-3059
fax: 617-687-0751
email: sales@ivcco.com