

IVC RD-PTZ-3130-01

Rapid deploy, Outdoor PTZ Color IP-Camera System



- *Video monitoring for temporary applications*
- *Day/Night switching for almost any lighting condition*
- *Transportable*
- *Wireless*

The RD-PTZ-3130-01 is a camera component option for IVC's RD series camera system. This assembly combines a high-resolution color PTZ camera and a fixed wireless radio. These are preconfigured and mounted on a rugged tripod with specially engineered quick connect assemblies to facilitate easy set up and breakdown. The system is shipped in a hardened, reusable case for easy transport. The camera has an 18x motor-driven optical zoom and a 4x digital multiplier providing 72x total zoom. The pan, tilt, and zoom functions can be controlled automatically and precisely from anywhere using the click-to-point and preset view features of the IVC Relay Server Software. This PTZ camera is a high performance low-light camera that automatically switches to black and white and removes an IR cut filter to increase sensitivity in low light conditions.

The system is designed for use with the RD-WL-3603-01 or RD-WL-3603-02, tripod-mounted 5.8 Ghz fixed wireless access points. All radios have an integrated 8 dBi antenna to support line of sight distances of up to 2 miles.

This camera system is ideal for use in applications that require temporary remote video monitoring such construction sites, public event monitoring, or disaster management.

Visit
www.ivcco.com/demonstrations/index.html
for a live video demonstration

IVC
&C
Industrial Video and Control

RD-PTZ-3130-01 Specifications

Camera

Imager	1/4" Sony ExView CCD
Shutter	1 to 1/10,000 seconds
Exposure	Auto
Min. Illum.	0.7 lux (Color); 0.005 Lux (B/W)
White Balance	Auto
Iris	Auto
Focus	Auto and manual
Zoom ratio	18x optical; 4x Digital; 72x Total
View Angle	2.8° - 48°
Focal Length	4.1 - 73.8 mm

Radio

Frequency	5.725 GHz to 5.850 GHz
Antenna Polarization	Horizontal/Vertical (software switchable)
Modulation Format	11 Mbps CCK Spread Spectrum
Bandwidth	10 Mbps

Assembly

Tripod Footprint	6 feet
Height	100" max.
Weight	Tripod in shipping bag: 36 lbs. Hardware in case: 50 lbs. Assembled unit: 85 lbs.

F-number	1.4
Pan Angle	360°
Pan Speed	170° per Second
Tilt Angle	-90° to 0° (113° view range)
Tilt Speed	90° per Second
Video	480 Lines (NTSC output on BNC)
I/O Terminals	1 Input, 1 Output
Resolution	704 x 480 and 352 x 240 pixels
Compression	M-JPEG
Frame Rate	30 FPS (352x240) 10 FPS (704x480)

Channels	6 non-overlapping channels
Antenna Beam Width	60 x 60 degrees
Access Point Compatibility	RD-WL-3603-01 RD-WL-3603-02
Network Protocols	IEEE 802.3/802.3u compliant

Voltage Req.	110V AC
Power Cons.	50 W
Oper. Temp	-29° to 50° C

Transporting/Set up

All RD Series components include rugged carrying cases to facilitate transporting the camera system to the next required site. The quick connect assemblies and preconfigured components make set up and breakdown of the system quick and easy. You essentially apply power, aim radios, and watch video.

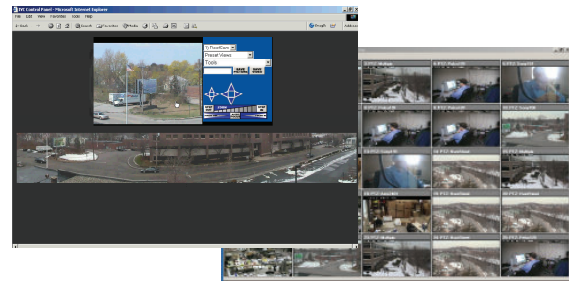
Extension options are available if additional radio or camera height is required.



For more information contact IVC or your local Authorized Reseller

IVC Camera System Software

IVC's enterprise-class video management software enables remote viewing and control of video from the RD Series camera systems. Video can be viewed by multiple users from a variety of clients including browsers, SCADA applications, and IVC's View Station software. IVC software supports large networks of cameras that can include other wired and legacy cameras along with the RD Series. User-defined multi-up displays, tour management, and alarm management functions are also available.



Point & click camera access and control

IVC
Industrial Video and Control

330 Nevada Street
Newton, MA 02460
ph: 617-467-3059
fax: 617-687-0751
email: sales@ivcco.com