

IVC RD-PTZ-3330-01

Rapid deploy, Outdoor PTZ Color IP-Camera System



- *Video monitoring for temporary applications*
- *Day/Night switching for almost any lighting condition*
- *Transportable*
- *WiFi compatible*

The RD-PTZ-3330-01 is a camera component option for IVC's RD series camera system. This assembly combines a high-resolution color PTZ camera and a fixed wireless radio. These are preconfigured and mounted on a rugged tripod with specially engineered quick connect assemblies to facilitate easy set up and breakdown. The system is shipped in a hardened, reusable case for easy transport. The camera has an 18x motor-driven optical zoom and a 4x digital multiplier providing 72x total zoom. The pan, tilt, and zoom functions can be controlled automatically and precisely from anywhere using the click-to-point and preset view features of the IVC Relay Server Software. This PTZ camera is a high performance low-light camera that automatically switches to black and white and removes an IR cut filter to increase sensitivity in low light conditions.

The system is designed for use with the RD-WL-3603-03, tripod-mounted 2.4 Ghz wireless access point or any other 802.11b/g compatible access point. The integrated radio includes an 8 dBi omni directional antenna.

This camera system is ideal for use in applications that require temporary remote video monitoring such construction sites, public event monitoring, or disaster management.

Visit
www.ivcco.com/demonstrations/index.html
for a live video demonstration

RD-PTZ-3330-01 Specifications

Camera

Imager	1/4" Sony ExView CCD
Shutter	1 to 1/10,000 seconds
Exposure	Auto
Min. Illum.	0.7 lux (Color); 0.005 Lux (B/W)
White Balance	Auto
Iris	Auto
Focus	Auto and manual
Zoom ratio	18x optical; 4x Digital; 72x Total
View Angle	2.8° - 48°
Focal Length	4.1 - 73.8 mm

F-number	1.4
Pan Angle	360°
Pan Speed	170° per Second
Tilt Angle	-90° to 0° (113° view range)
Tilt Speed	90° per Second
I/O Terminals	4 Input, 4 Output
Resolution	704 x 480 and 352 x 240 pixels
Compression	M-JPEG, MPEG-4
Frame Rate	30 FPS M-JPEG 20 FPS MPEG-4

Radio

Frequency	2412-2462Mhz
WAN/LAN Protocol	802.11b/g
Transmit Power	400mw

Bandwidth	54 Mbps
Antenna	8 dBi omni
Security	802.1x, 64/128-bit WEP, WPA, WPA2, 802.11i

Assembly

Tripod Footprint	6 feet
Height	100" max.
Weight	Tripod in shipping bag: 36 lbs. Hardware in case: 50 lbs. Assembled unit: 85 lbs.

Voltage Req.	110V AC
Power Cons.	50 W
Oper. Temp	-29° to 50° C

Transporting/Set up

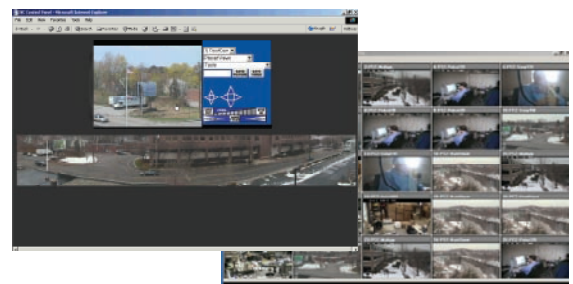
This RD Series product includes a rugged carrying case to facilitate transporting the camera system to the next required site. The quick connect assemblies and preconfigured components make set up and breakdown of the system quick and easy. You essentially apply power, aim radios, and watch video.

Extension options are available if additional radio or camera height is required.



IVC Camera System Software

IVC's enterprise-class video management software enables remote viewing and control of video from the RD Series camera systems. Video can be viewed by multiple users from a variety of clients including browsers, SCADA applications, and IVC's View Station software. IVC software supports large networks of cameras that can include other wired and legacy cameras along with the RD Series. User-defined multi-up displays, tour management, and alarm management functions are also available.



Point & click camera access and control



330 Nevada Street
Newton, MA 02460
ph: 617-467-3059
fax: 617-687-0751
email: sales@ivcco.com