

IVC RD-WL-3603-01

Rapid deploy, Outdoor Wireless Access Point



- *For use with IVC RD Series wireless cameras*
- *Operates both in 5.3 and 5.8 Ghz unlicensed bands*
- *Up to 2 miles LOS*
- *Transportable*

The RD-WL-3603-01 is a component option for IVC's RD series camera system. This assembly provides a wireless radio to act as an access point for the camera system. The radio is preconfigured and mounted on a rugged tripod with specially engineered quick connect assemblies to facilitate easy set up and breakdown. Reusable carrying cases are provided to transport the component from site to site. The access point would be connected to a wired network to provide LAN, WAN, or Internet access to video from connected cameras

The system is designed for use with the RD-PTZ-3130-01 and other tripod-mounted camera/radio assemblies in the RD Series family. The radio includes an integrated 14 dBi antenna to support line of sight distances of up to 2 miles.

The RD-WL-3603-01 is equipped with SMARTPolling™, a powerful prioritization scheme designed to ensure the most effective use of available bandwidth. SMARTPolling™ allows the AP to dynamically and adaptively poll each RD Series camera, favoring cameras that are engaged in sending video guaranteeing the lowest latency for those devices.

The RD Series camera system is ideal for use in applications that require temporary remote video monitoring such construction sites, public event monitoring, or disaster management.

Visit
www.ivcco.com/demonstrations/index.html
for a live video demonstration



RD-WL-3603-01 Specifications

Radio	
Frequency	High Band (ISM Band): 5725 MHz to 5850 MHz Low Band (U-NII Band): 5250 MHz to 5350 MHz
Antenna	Integrated patch, 14 dBi, dual polarized
Modulation Format	Direct Sequence Spread Spectrum (DSSS) with RAKE
Bandwidth	10 Mbps
Channels	High Band (ISM Band): 6 non-overlapping channels Low Band (U-NII Band): 5 non-overlapping channels
Antenna Beam Width	60° x 10° beamwidth
Camera Compatibility	RD-PTZ-3130-01, RD-PTZ-3330-01, and others
Network Protocols	IEEE 802.3/802.3u compliant

Assembly

Tripod Footprint	6 feet
Height	100" max.
Weight	Tripod in shipping bag: 36 lbs. (Radio ships in associated camera case)

Voltage Req.	110V AC
Power Cons.	13.4 W
Oper. Temp	-40 to 60° C

Transporting/Set up

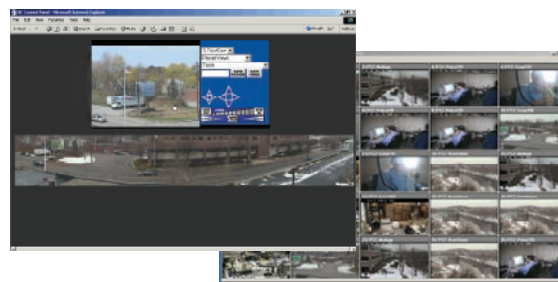
This RD Series product includes a rugged carrying case to facilitate transporting the camera system to the next required site. The quick connect assemblies and preconfigured components make set up and breakdown of the system quick and easy. You essentially apply power, aim radios, and watch video.

Extension options are available if additional radio or camera height is required.



IVC Camera System Software

IVC's enterprise-class video management software enables remote viewing and control of video from the RD Series camera systems. Video can be viewed by multiple users from a variety of clients including browsers, SCADA applications, and IVC's View Station software. IVC software supports large networks of cameras that can include other wired and legacy cameras along with the RD Series. User-defined multi-up displays, tour management, and alarm management functions are also available.



Point & click camera access and control



330 Nevada Street
Newton, MA 02460
ph: 617-467-3059
fax: 617-687-0751
email: sales@ivcco.com