

IVC APPLICATION NOTE:

Prison Security System

IVC video is used in an advanced integrated security system at a newly constructed prison in the Southeast. The facility has a capacity in excess of 500 inmates in a three building complex.

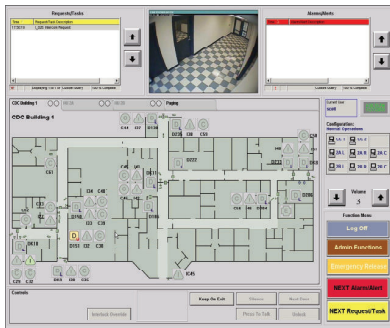
Two operators in the Administration Building monitor video, respond to alarms and alerts, and manage door access. They control access remotely for all three buildings and all doors within the administration building.

The video system consists of several camera servers located in each building of the complex. The camera servers convert analog video to digital IP for network distribution and are connected via a fiber backbone to IVC Relay Servers and IVC View Stations. In addition to running IVC software for video control and display, the system is fully integrated with Wonderware software for access control. It also incorporates two-way intercom communication to all control doors.



Operators view and control the system using touch screen monitors that simplify operation thereby significantly reducing training costs. IVC View Station Software is configured for the touch screens with buttons assigned and intuitively labeled for each of the various operations.

At the prison's central control room, there are two operators each attending an access control monitor and sharing a video camera display. Each of the other two buildings has two touch screen monitors to control prison cells and the internal doors. A third monitor controls entry to the individual cell pods.



For increased security, outside access to all three buildings is controlled from the Administration Building. When someone wants to pass through a door, an alert appears on the operator's screen, video from a camera adjacent to the door is displayed, the door lock switch for that door is displayed, and the proper intercom is connected, all automatically. The operator can enable the door opening, the event is automatically logged, and video is saved for future review if necessary.

A systems integrator that specializes in prisons and jails implemented this project. IVC worked closely with the integrator and added additional features to its View Station to accommodate the customer's requirements. Using IVC Active-X controls, it was possible to easily create a seamless integration with Wonderware.

