

# IVC RD-PTZ-3330-02

## Rapid deploy, Outdoor PTZ Color IP-Camera System



- *Video monitoring for temporary applications*
- *Day/Night switching for almost any lighting condition*
- *Transportable*
- *Cellular connectivity*

The RD-PTZ-3330-02 is a camera component option for IVC's RD series camera system. This assembly combines a high-resolution color PTZ camera and a fixed cellular network connection. These are preconfigured and mounted on a rugged tripod with specially engineered quick connect assemblies to facilitate easy set up and breakdown. The camera has an 18x motor-driven optical zoom and a 4x digital multiplier providing 72x total zoom. The pan, tilt, and zoom functions can be controlled automatically and precisely from anywhere using the click-to-point and preset view features of the IVC Relay Server Software. This PTZ camera is a high performance low-light camera that automatically switches to black and white and removes an IR cut filter to increase sensitivity in low light conditions.

An "always on" network connection is provided by an integrated 3G EVDO Rev. A cellular router. The camera is shipped preconfigured and ready for deployment on leading broadband cellular networks, such as Sprint®. It is well-suited for applications that require temporary high-quality video surveillance, such as public safety and construction.

This camera system is ideal for use in applications that require temporary remote video monitoring such construction sites, public event monitoring, or disaster management.

Visit  
[www.ivcco.com/demonstrations/index.html](http://www.ivcco.com/demonstrations/index.html)  
for a live video demonstration

**IVC**  
&  
INDUSTRIAL  
VIDEO & CONTROL

# RD-PTZ-3330-02 Specifications

## Camera

|                      |                                    |                      |                                |
|----------------------|------------------------------------|----------------------|--------------------------------|
| <b>Imager</b>        | 1/4" Sony ExView CCD               | <b>F-number</b>      | 1.4                            |
| <b>Shutter</b>       | 1 to 1/10,000 seconds              | <b>Pan Angle</b>     | 360°                           |
| <b>Exposure</b>      | Auto                               | <b>Pan Speed</b>     | 170° per Second                |
| <b>Min. Illum.</b>   | 0.7 lux (Color); 0.005 Lux (B/W)   | <b>Tilt Angle</b>    | -90° to 0° (113° view range)   |
| <b>White Balance</b> | Auto                               | <b>Tilt Speed</b>    | 90° per Second                 |
| <b>Iris</b>          | Auto                               | <b>I/O Terminals</b> | 1 Input, 1 Output              |
| <b>Focus</b>         | Auto and manual                    | <b>Resolution</b>    | 704 x 480 and 352 x 240 pixels |
| <b>Zoom ratio</b>    | 18x optical; 4x Digital; 72x Total | <b>Compression</b>   | M-JPEG, MPEG-4, H.264          |
| <b>View Angle</b>    | 2.8° - 48°                         | <b>Frame Rate</b>    | 30 FPS                         |
| <b>Focal Length</b>  | 4.1 - 73.8 mm                      |                      |                                |

## Cellular

**Ethernet** Integrated 3G EVDO Rev. A router\*

## Assembly

|                         |   |                     |               |
|-------------------------|---|---------------------|---------------|
| <b>Tripod Footprint</b> | 6 feet  | <b>Voltage Req.</b> | 110V AC       |
| <b>Height</b>           | 100" max.   | <b>Power Cons.</b>  | 50 W          |
| <b>Weight</b>           | Tripod in shipping bag: 36 lbs.<br>Hardware in case: 50 lbs.<br>Assembled unit: 85 lbs. | <b>Oper. Temp</b>   | -29° to 50° C |

\*Camera price includes setup on provider network. Service contract required. Monthly service fees extra.

## Transporting/Set up

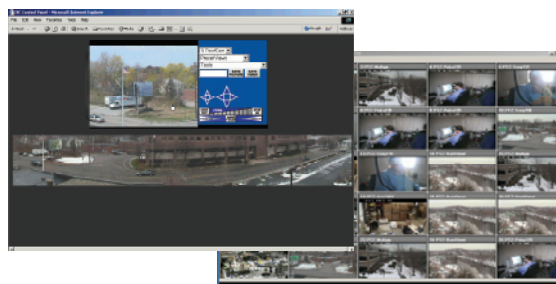
This RD Series product includes a rugged carrying case to facilitate transporting the camera system to the next required site. The quick connect assemblies and preconfigured components make set up and breakdown of the system quick and easy. You essentially apply power, aim radios, and watch video.

Extension options are available if additional radio or camera height is required.



## IVC Camera System Software

IVC's enterprise-class video management software enables remote viewing and control of video from the RD Series camera systems. Video can be viewed by multiple users from a variety of clients including browsers, SCADA applications, and IVC's View Station software. IVC software supports large networks of cameras that can include other wired and legacy cameras along with the RD Series. User-defined multi-up displays, tour management, and alarm management functions are also available.



Point & click camera access and control



330 Nevada Street  
Newton, MA 02460  
ph: 617-467-3059  
fax: 617-687-0751  
email: sales@ivcco.com