

# The Console Recorder

## Less Downtime, Fewer Mistakes



The Longwatch Console Recorder is software for your computer that enables automatic recording of your HMI or SCADA operator's console display. This solution archives **exactly** what the operator was seeing, because it records the video that's being sent to the display itself. Playing back what the operator was seeing can be a very valuable method for troubleshooting, training and process improvement.

The Console Recorder solves real issues:

- The NTSB reported operator interface factors that caused delayed or erroneous response to pipeline events.
- The Center for Energy Workforce Development estimates 50% worker turnover in the next 5 years.
- The International Atomic Energy Agency recommends video as a means of retaining and sustaining best-practice knowledge to manage operating risk.

The Console Recorder addresses these issues – and more – by becoming a “flight recorder” for your plant's cockpit – the control room.

### An Elegantly Simple Solution

Before Longwatch, recording and playback of the operator's HMI display was clumsy and limited: driving the console display with data collected by the data historian requires that *all* values contained in *every* display are archived. Playback would interfere with run-time operations. And how do you know which display page the operator was using when a particular event occurred?

The Longwatch Console Recorder records **all** information on the display: multiple windows and mouse movements. It's an easy way to see what the operator was seeing, and what responses were made.

Professional sports teams use “game films” to prepare for their contests and to sharpen their skills. The Console Recorder can help your operations team win!

### APPLICATIONS

- Reduce downtime by streamlining your **troubleshooting** process
- Improve efficiency by **training** operators in best practices:
- **Document** your process for analysis and improvement
- **Track** your manufacturing for quality monitoring and regulatory compliance.

### SIMPLE and EFFECTIVE

- Software module collects video directly from the graphics card. No special hardware required.
- Live and Recorded video capability
- Read-only display provides better security

### AUTOMATIC VIDEO LINKING

- Click on an event message and the selected video plays automatically. Saves time and effort.
- Link to any SQL data in your process automation system for new insights and information.

### STAND ALONE PLAYBACK

- Viewer can display one or multiple consoles simultaneously
- Playback does not interfere with real-time operations.
- Read-only player can be viewed anywhere using Internet Explorer

### INDUSTRY STANDARDS

- Installs easily in any Microsoft Windows platform.
- Display using the Longwatch Viewer on Internet Explorer, or ActiveX controls in your application.

# The Console Recorder



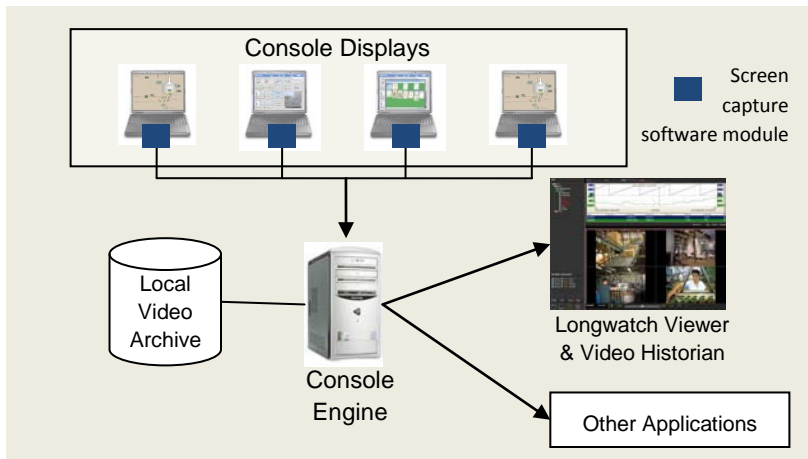
## CONFIGURATION

The Longwatch Console Recorder consists of a software module that is installed in computer or server that runs your HMI or operator's console software. The Console Recorder then connects to the Longwatch Console Video Engine directly (if loaded into the same workstation) or via the network (if running on a separate computer.)

The Console Recorder supports the following configurations:

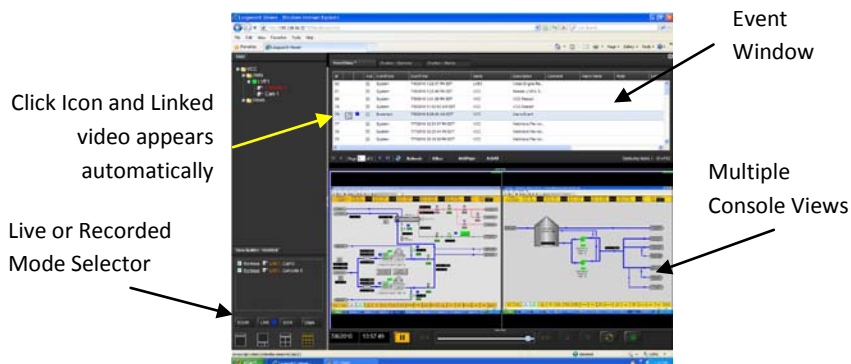
- Direct connection (using Longwatch ScreenCam service)
- Virtual Network Computing (VNC) interface
- Thin Client (Terminal Server-Client)

## SYSTEM DIAGRAM



## INTEGRATION

The Longwatch Console Recorder features a multi-mode Viewer that enables live and recorded video to be displayed from one or more console simultaneously. "Data tabs" at the top of the top of the display integrate the video with alarms and events, enabling one-click access to the video of interest.



## SYSTEM REQUIREMENTS

- Connects via software to any Microsoft Windows-based HMI/display software
- Connects to co-installed or separate Longwatch Console/Video Engine software

## OPERATION

- Automatically matches the screen resolution of the HMI display being recorded
- Frame rates are user-selectable
- Video stored along with other Longwatch video in standard video format
- Mouse movements captured and recorded
- Multiple displays can be recorded simultaneously
- Multiple displays can be played back simultaneously
- Real-time and recorded playback in read-only mode.
- User-defined "bookmarks" to annotate key video segments for easy recall.

## About Longwatch

Longwatch was founded by a team of industry veterans with the goal of providing video over a variety of industrial communications networks. Advanced technology incorporated in the system enables automation system operators to utilize video to monitor and verify activities within the plant as well as at remote sites using the existing communications infrastructure. Longwatch delivers video for regulatory compliance, operating efficiency and security. Longwatch is a division of Industrial Video & Control Co.

### Longwatch – division of IVC

330 Nevada Street Newton MA, 02460  
+1 781-255-7400

[www.longwatch.com](http://www.longwatch.com) | [info@longwatch.com](mailto:info@longwatch.com)