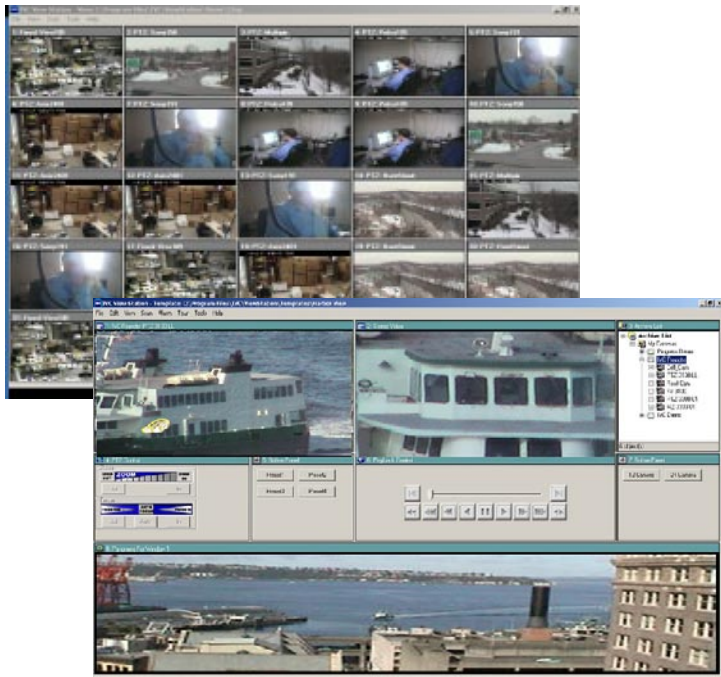


# IVC View Station Software

## Fully Configurable Camera Viewing Software



- *Create any number of views*
- *Point & click access to video from any camera*
- *Event- or schedule-based system wide automation*
- *Simultaneous support of multiple camera models and codecs*
- *Alarm management*
- *Build locked-down consoles with limited menus*
- *User-defined button panels*

The View Station presents a fully featured operator interface to a network of video cameras. Operators are provided camera access and control regardless of location or size of the video network.

The View Station features and tools present an open platform with limitless possibilities for integration of legacy or emerging third party software and hardware technologies. View Station provides a scalable architecture providing robust performance for systems of any size.

Visit  
[www.ivcco.com/demonstrations/index.html](http://www.ivcco.com/demonstrations/index.html)  
for a live video demonstration

# Create any view you need

The format and content of a View Station display is fully configurable. Multiple views can be defined and subsequently displayed based on system conditions or user requirements. In addition to live and stored video, a view may include any mix of the available screen elements and functions.

## Available Screen Elements:

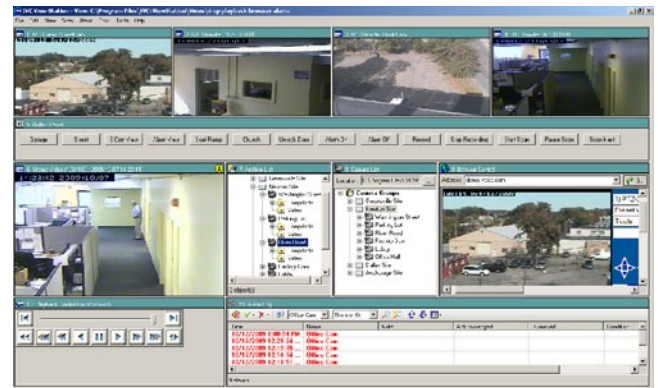
- PTZ controls
- Panoramas
- Configurable button controls
- Browser windows
- Tour controls
- Playback controls
- Camera lists
- Archived video directory
- Alarm log



**Multi-monitor views**

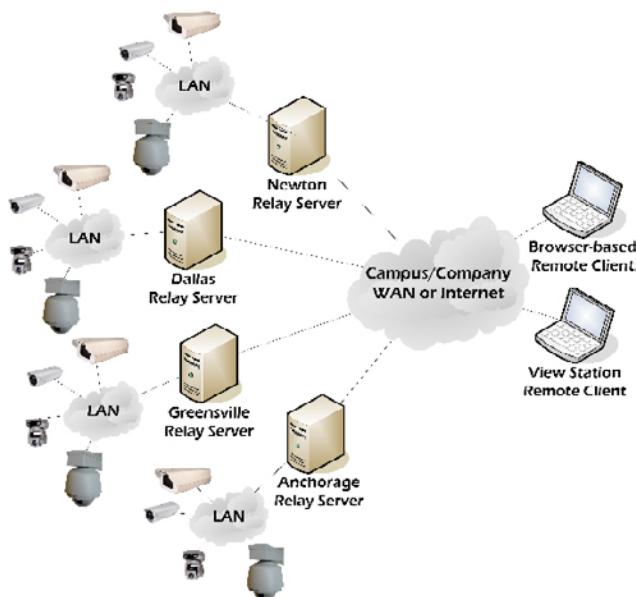


**Kiosk/Touchscreen Operator Consoles**



**Event response views**

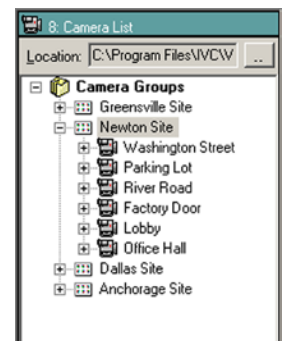
# Camera management



*This diagram illustrates the distributed nature of IVC's extremely flexible video network architecture.*

The View Station puts no limitations on how you manage your camera network. Include cameras from multiple manufacturers. Combine M-JPEG, MPEG-4, and H.264.

Regardless of the size of your video network, you decide which cameras to manage with a given View Station. Group cameras any way appropriate - by function, by type, by location, etc.



*From the View Station camera list, you may drag and drop cameras to live video windows.*

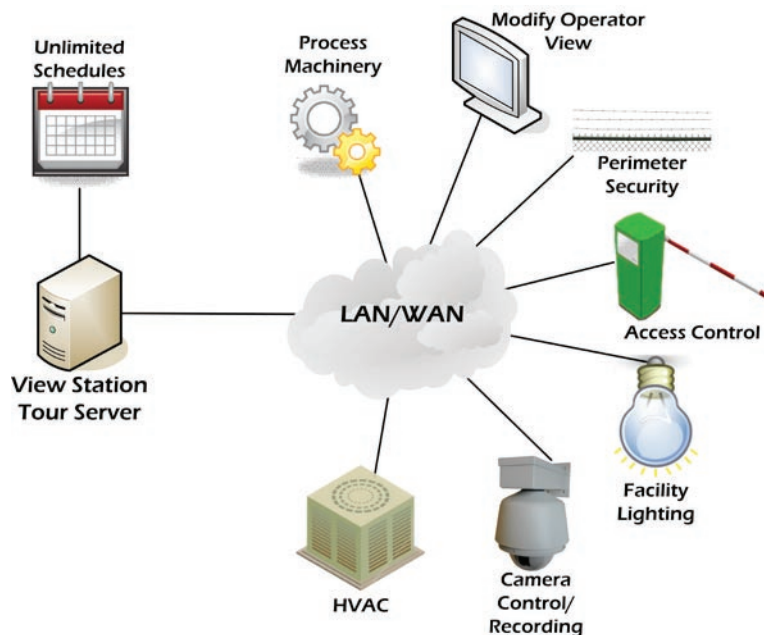
**Group cameras for viewing in any way that suits the application!**

## Fully integrated automation

The View Station can be the “Swiss Army Knife” of your surveillance system. It includes several tools and mechanisms to integrate our video system with other system components. Since our system is IP-based, we can monitor or control not only cameras, but any device or software component connected to the video network. If you have a device currently installed that is not network-capable, our engineers can devise a strategy to accomplish this.

### Scheduled Tours

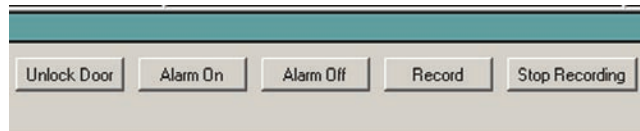
- Schedule-based automation; no operator intervention necessary
- Create as many schedules as you need
- Control camera operations
- Activate/Deactivate other security or facility devices
- Change operator views according to time of day or shift



### Operator-initiated operations

The View Station software provides the ability for the user to create one or more button panels within a view. The panels could include buttons to:

- Issue commands to other devices or software on the network
- Move camera to a preset position
- Start or stop video recording
- Control camera scans
- Open new view



A video surveillance system designer may add as many button panels and buttons as are necessary to provide the automation needed.

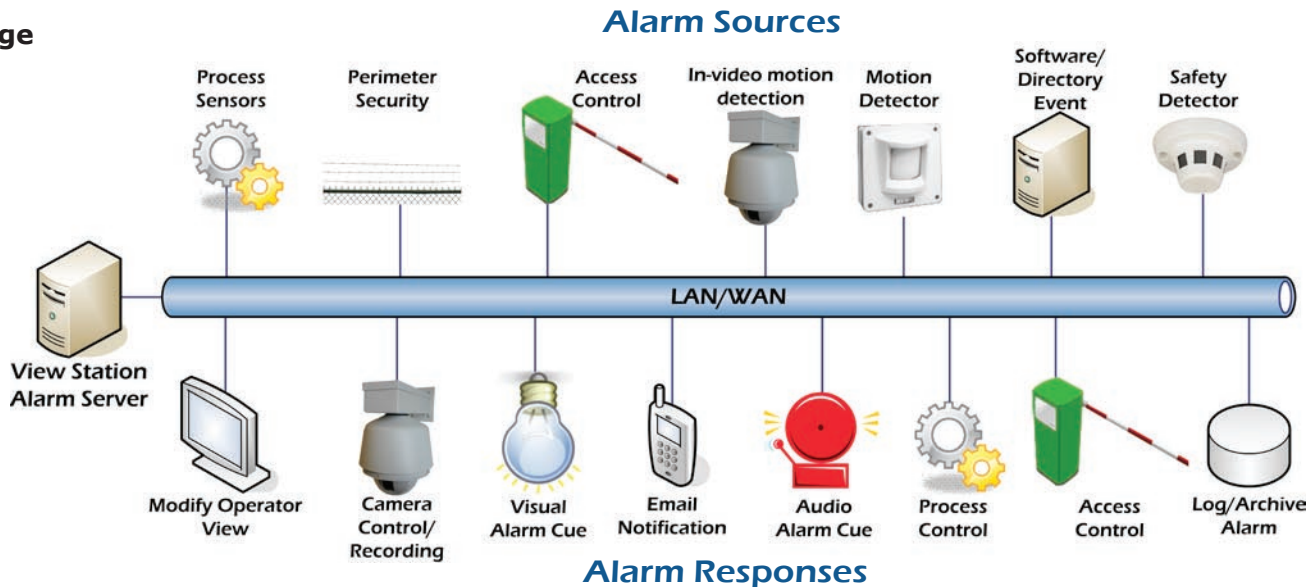
### Event-based automation

View Station’s Alarm Server is our alarm system integration tool. It can listen for multiple alarm message types from a variety of devices including cameras. As the diagram illustrates below, users have the flexibility to choose any number of standard and custom responses.

#### Alarm Message

##### Types:

- TCP
- SMTP
- FTP
- Telnet
- MODBUS
- IPASCI
- Other
- Custom



## Why choose IVC?

IVC is committed to your successful implementation of our View Station software. That is why we include 90 days of free, unlimited phone, email, and web support with each license. Our support engineers will help you through installation and configuration of your software so that it operates to your satisfaction.

To speed installation, shorten your learning curve, and ensure a positive experience with IVC products, we offer the following services to help you get your system fully functional as quickly as possible:

- Factory Training** - Our technical professionals train you, at our facility or yours, on the fine points of your IVC video solution.
- Preconfiguration** - We preconfigure your software to your specifications prior to shipment to shorten installation time.
- Custom Solutions** - Our hardware and software engineers customize a solution to meet your exacting requirements; integrate 3rd party or legacy hardware or software.
- On-site Support** - Our engineers visit your facility to assist in system installation and configuration.
- Factory Acceptance Tests** - We test all or a representative portion of your system prior to shipment to ensure that what we deliver meets your stringent requirements. Iron out the details before the products hit your dock.
- Support Subscriptions** - Subscribe to our extended software support to enjoy a year's worth of the same quality service you received during the first 90 days.

## System Requirements

IVC recommends the following minimum requirements for a computer running the View Station Software:

<b>CPU</b>	Intel Core2 Duo E7500
<b>RAM</b>	2 Gbytes DDR memory
<b>HDD</b>	2 Tbytes
<b>Ethernet</b>	10/100/1000Base-TX
<b>Video Card</b>	Two AGP cards w/ 512 MBytes RAM
<b>Operating System</b>	Windows <sup>XP</sup> Professional Windows Vista Windows 7



## Ordering Information

View Station Software includes all the tools necessary to create views, camera scans, tours, and user-defined buttons. It also includes a sophisticated alarm manager. The software is licensed based on the number of cameras that can be simultaneously connected from one or more Relay Servers. A single license is good for multiple computers at a single site. Multiple sites would require multiple licenses.

To simplify your installation, IVC offers computers pre-configured with the appropriate View Station Software. Ask your IVC representative about this option.

<b>Part Number</b>	<b>Description</b>
VSS-4004	Provides for simultaneous viewing and control of up to four cameras.
VSS-4008	Provides for simultaneous viewing and control of up to eight cameras.
VSS-4016	Provides for simultaneous viewing and control of up to sixteen cameras.
VSS-4024	Provides for simultaneous viewing and control of up to twenty four cameras.
VSS-4099	Provides for simultaneous viewing and control of an unlimited number of cameras

Industrial Video and Control

330 Nevada Street  
Newton, MA 02460  
ph: 617-467-3059  
fax: 617-687-0751  
email: sales@ivcco.com