

# NetworkCam

PTZ-3300-01

User's Manual



**IV&C**

Industrial Video and Control

---

---

# Package Contents

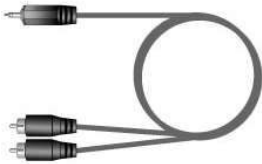
Network Camera



Power adapter



A/V Cable



Remote Controller



Camera stand

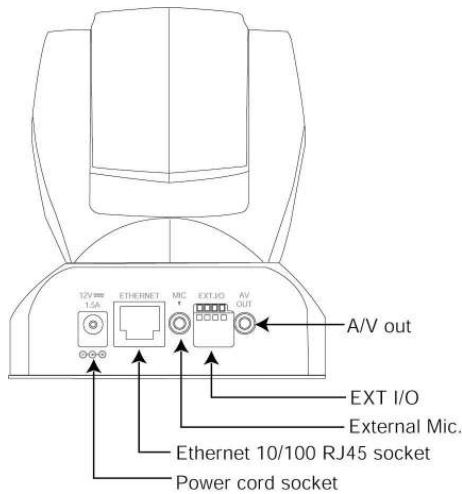


---


---

# Installation

## Hardware Installation



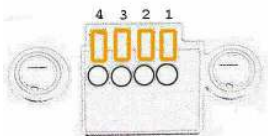
Please verify that your product package contains all the accessories listed in the foregoing Package Contents. Depending on the user's application, an Ethernet cable may be needed. The Ethernet cable should meet the specs of UTP Category 5 and not exceed 100 meters in length.

 Connect the power adapter jack to the Network Camera before plugging in to the power socket. This will reduce the risk of accidental electric shock.

Upon powering up, the device runs through a self-test procedure and the front LEDs will blink between green and red for a few times. If self-test passes, the LEDs will shut off and the Network Camera will be on stand-by and ready for software installation. If self-test fails the red LED will blink several times. Refer to Appendix A for troubleshooting.

### **To install in Ethernet**

Make sure the Ethernet is firmly connected to a switch hub. After attaching the Ethernet cable plug in the power adapter. If the LED turns out to be steady green after self-test, go to next paragraph "Software Installation".



- |   |           |   |
|---|-----------|---|
| 1 | DI+       | INPUT (Max. 50mA, 12VDC)  |
| 2 | DI-       | INPUT (Initial state of DI is low)  |
| 3 | SW_COMMON | OUTPUT (open from SW_OPEN at initial state)<br>(close with SW_OPEN when set DO to ON) |
| 4 | SW_NOPEN  | OUTPUT (Max. 1A, 24VDC or 0.5A, 125VAC)   |

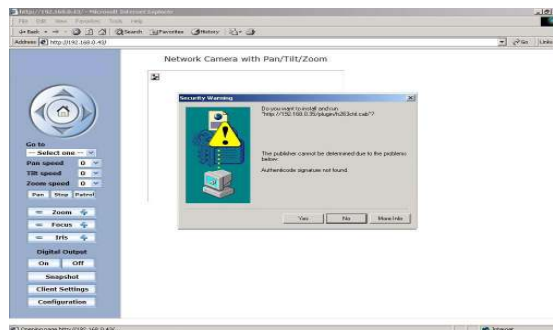
---

---

# Initial Access to the Network Camera

## Installing Plug-in

For the initial access to the Network Camera in Windows, the web browser may prompt for permission to install a new plug-in for the Network Camera after a period of time of downloading. Permission request depends on the Internet security settings of the user's PC or notebook. If the highest security level is set, the computer may prohibit any installation and execution attempt. This plug-in has been registered for certificate and is used to display the video in the browser. Users may click on **Yes** to proceed. If the web browser does not allow the user to continue to install, check the Internet security option and lower the security levels or contact your IT or networking supervisor for help.



## Add Password to Prevent Unauthorized Access

The default Administrator's password is blank and the Network Camera initially will not ask for any password. The Administrator should immediately implement a new password as a matter of prudent security practice. Once the Administrator's password is saved, the Network Camera will ask for the user's name and password before each access. The Administrator can set up a maximum of twenty (20) user accounts. Each user can access the Network Camera except to perform system configuration. Some critical functions are exclusive for the Administrator, such as system configuration, user administration, and software upgrades. The user name for the Administrator is permanently assigned as "root". Once the password is changed, the browser will display an authentication window to ask for the new password. **Once the password is set, there is no provision to recover the Administrator's password. The only option is to restore to the original factory default settings.**

---

---

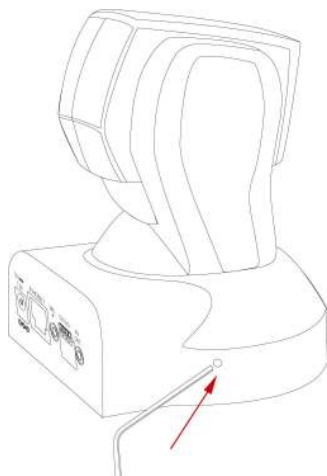
# Appendix

## A. Troubleshooting

### Status LED

After powering up, the Network Camera performs a self-diagnostic to detect any hardware defects. The following table lists the LED patterns in general. In case of any fatal error, the LED will blink in a pattern other than those below.

Condition	LED color
During self-diagnostic after power on	Blink in interchanged green and red
Ethernet signal is lost	Red LED is off till Ethernet is detected
Before network is setup	Steady green till IP address is confirmed
After network is setup	Blink green every second
Any hardware failure	Other patterns



Restoring the factory defaults will erase any previous settings. Reset or restore the system after power on.

### Reset and Restore

At the left side of the camera there is a button hidden in the pinhole as shown in the picture. It is used to reset the system or restore the factory default settings. Sometimes resetting the system sets the system back to normal state. If the system problems remain after reset, restore the factory settings and install again.

RESET: Poke the wrench to click on the button.

RESTORE: 1. Poke the wrench to press on the button continuously. 2. Wait for self-diagnostic. During the diagnostic period, the red & green lights will flick for several times. 3. Withdraw the wrench when all the lights are off.

---

---

## B. Cleaning the Lens

The Network Camera with Pan/Tilt/Zoom is a network camera with high quality lens. When it is necessary to clean the lens, please follow these instructions:

Prepare cotton swabs and alcohol.

Moisten the cotton swab with alcohol.

Slightly clean the lens.

1. If the lens is still dirty, repeat 2~3 steps until it is cleaned. Change a clean cotton swab if the old one is dirty or contains dirt that might scrape the lens. **Never touch the lens hard or roughly.**

## C. Technical Specifications

### - Networking

#### Protocol

TCP/IP, HTTP, SMTP, FTP, Telnet, NTP, DNS UPnP, DDNS and DHCP

#### Physical

10BaseT Ethernet or 100BaseT Fast Ethernet

### - Video

#### Algorithm supported

MPEG4 SP

MJPEG

#### Resolution

Up to 30/25 frames at 176x120 or 176x144

Up to 30/25 frames at 352x240 or 352x288

Up to 15/12 frames at 704x480 or 704x576

### - Camera specification

1/4 inch color CCD sensor

Typical: 1.5 Lux / F1.8

Low lux mode: 0.05 Lux/F1.8

AGC, AWB

Electronic shutter: 1/60(1/50) to 1/120,000 sec

Pixel Numbers: NTSC - 542(H)x496(V) or PAL -

542(H)x586(V)

### - Lens

Focal length 4.2~42mm

Aperture F1.8~2.9

10X optical zoom

10X digital zoom

### - General I/O

1 sensor input(max. 12VDC 50mA)

1 relay output(max. 24VDC 1A, 125VAC 0.5A)

### - LED indicator

Dual color system status indicator

### - Weight

NET. 450g

### - Dimension

104.5mm(L) \* 104.5mm(W) \* 127mm(H)

### - Power

Consumption: MAX 12 W

Universal switching power-supply included

Adapter input: 100-240VAC, 50/60Hz, 0.4A

Adapter output: 12VDC, 1.5A

### - Operating Environment

Temperature: 0-40°C/32-104°F

Humidity: 85%RH

### -EMI & Safety

CE, FCC