

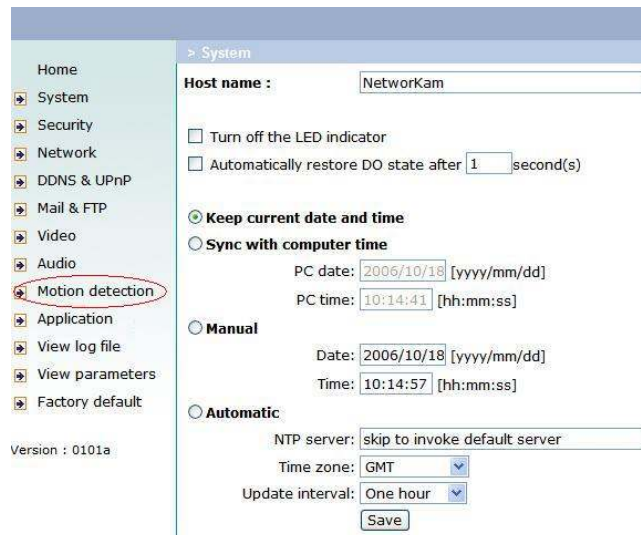
## Motion Detection settings

These settings are applicable for the following cameras:

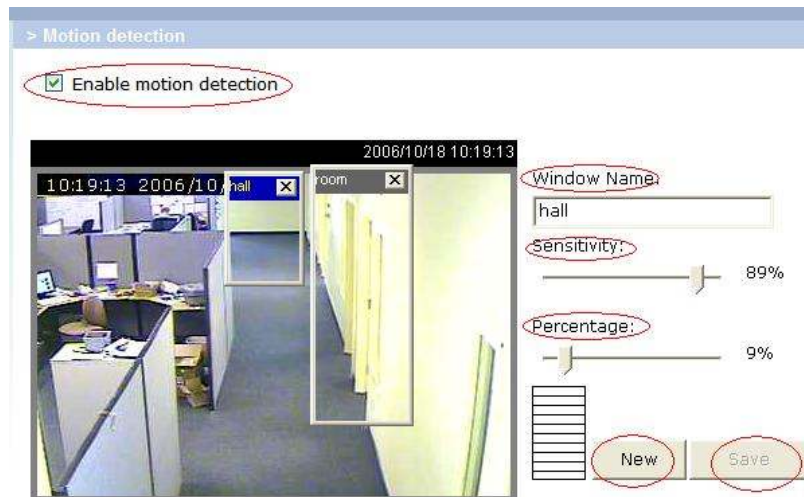
**MZ-3333-01**

To set up motion detection:

- 1) Log on to the camera with its IP address and enter the username and password.
- 2) On the left hand side click the **Configuration** link.
- 3) The following page will be displayed:



- 4) Click on Motion Detection and the page below will be displayed.



- 5) Check the “Enable Motion Detection” box and click NEW. Resize the window to cover the area you would like to monitor and give it a name under WINDOW NAME and adjust the SENSITIVITY and PERCENTAGE then click SAVE.

**Note:** Your camera supports maximum of 3 zones (windows) for detecting motion.

- 6) Once you have adjusted all the zones with right level of sensitivity and percentage, click on Applications and enter the settings exactly as shown for **in-video motion detection**,

**Weekly schedule**  
 Sun  Mon  Tue  Wed  Thu  Fri  Sat  
 snapshots begin at  [hh:mm:ss]  
 snapshots stop at  [hh:mm:ss]  
 All the time except for the above schedule

**Snapshot file name prefix**

**Event operation**

**General**  
 Delay  second(s) before detecting the next event  
 Send  pre-event image(s) when event occurs

**Trigger condition**  
 Input is high  Input is low  
 Input is rising  Input is falling  
 Detect motion in :  hall  room **Name of Zones created in Motion Detection Page**  
 Note: Motion detect

**Trigger action**  
 Trigger output alarm while input condition matched  
 Trigger output alarm while motion detected  
 Upload snapshots while input condition matched  
 Upload snapshots while motion detected

**Reset output**

**Sequential operation**  
**Snapshot interval:**  second(s)

**Send snapshots by email**  
 **Send snapshots by FTP**  
 FTP put snapshots with date and time suffix

7) For external Motion Detector the settings will be as shown below:

**Weekly schedule**  
 Sun  Mon  Tue  Wed  Thu  Fri  Sat  
 snapshots begin at  [hh:mm:ss]  
 snapshots stop at  [hh:mm:ss]  
 All the time except for the above schedule

**Snapshot file name prefix**

**Event operation**

**General**  
 Delay  second(s) before detecting the next event  
 Send  pre-event image(s) when event occurs

**Trigger condition**  
 Input is high  Input is low  
 Input is rising  Input is falling  
 Detect motion in :  hall  room  
 Note: Motion detection must be setup first

**Trigger action**  
 Trigger output alarm while input condition matched  
 Trigger output alarm while motion detected  
 Upload snapshots while input condition matched  
 Upload snapshots while motion detected

**Reset output**

**Sequential operation**  
**Snapshot interval:**  second(s)

**Send snapshots by email**  
 **Send snapshots by FTP**  
 FTP put snapshots with date and time suffix

**Note:** The “**Object size**” decides the space ratio of motioned objects over the monitored screen. The “**Sensitivity**” sets the measurable difference between two sequential frames that would indicate motion. The larger object size and lower sensitivity will make Video Server ignore small variations in images.

**Note:** In-video Motion Detection is environmentally dependent. When working with sensitive settings, some triggered events may be considered false alarms though there is little change between frames usually caused by florescent light flashing, shadow shifting, and so on.

- 8) Once you have changed the settings click SAVE.
- 9) Click Mail & FTP on the left hand side. The following page will be displayed.

<b>SMTP</b>	
1st SMTP (mail) server	192.168.1.29 <span style="color: red; font-weight: bold;">ViewStation Computer IP address where Alarm Server is running</span>
1st SMTP account name	<input type="text"/>
1st SMTP password	<input type="password"/>
1st recipient email address	test@test.com
2nd SMTP (mail) server	<input type="text"/>
2nd SMTP account name	<input type="text"/>
2nd SMTP password	<input type="password"/>
2nd recipient email address	<input type="text"/>
Sender email address	sender@test.com

- 10) Confirm that the 1<sup>st</sup> SMTP (mail) Server is your View Station Computer IP Address (where your Alarm Server is running). Also 1<sup>st</sup> recipient email and Sender email address should remain unchanged as shown in picture.
- 11) Once the settings are changed click SAVE at the bottom of the page. This will save the right settings on the camera itself. You will then configure the View Station Software for Alarm Logs and event based storage. Refer to VSS Guide for more information.